

FEATURES

- The diaphragm pulse valves are especially designed for dust collector service applications, combining high flow, long life and extremely fast opening and closing to produce reliable and economical operation
- The high flow, angle type bodies, springless construction, in combination with the special diaphragm assemblies give the unique operating features required for dust collector service applications
- Integral compression fittings for fast, easy, secure installation
- Built-in silencers guarantee noise free operation and avoid foreign particles entering the valve
- The integral operators are provided with epoxy moulded F-class coils. Various optional waterproof and explosionproof solenoids for use in potentially explosive atmospheres (gas & dust) according to Directive ATEX 2014/34/EU can be mounted on the same basic valve
- The components satisfy all relevant EC directives



GENERAL

Differential pressure (PS) 0,35 - 8,5 bar [1 bar = 100kPa]
Ambient temperature range -20 to +85°C

| fluid (*) | temperature range (TS) | piston/diaphragm |
|-----------|------------------------|---|
| air | -20 to +85 °C | TPE (thermoplastic polyester elastomer) |
| | -20 to +120 °C | FPM (fluoroelastomer) |

CONSTRUCTION

(*) Ensure that the compatibility of the fluids in contact with the materials is verified

| | |
|------------------------------|--|
| Body | Aluminium |
| Core tube | Stainless steel |
| Core and plugnut | Stainless steel |
| Core spring | Stainless steel |
| Sealings & disc | NBR (nitrile) |
| Diaphragm | TPE or FPM |
| Shading coil | Copper |
| Coil insulation class | F |
| Connector | Spade plug (cable Ø 6 - 10 mm), ISO 4400 |
| Electrical safety | IEC 335 |

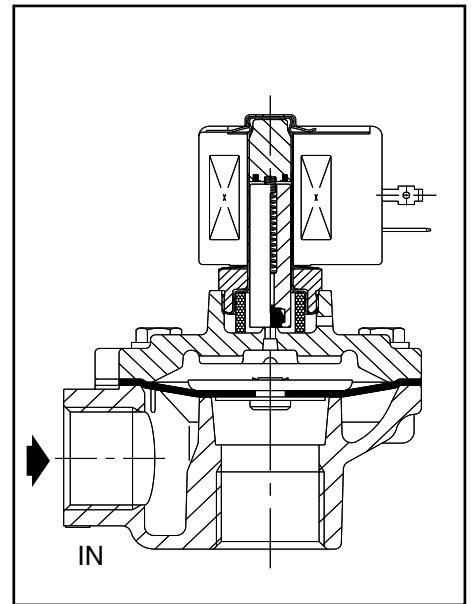


Figure shows catalogue number G353A043

ELECTRICAL CHARACTERISTICS

Standard voltages DC (=) : 24V
 (Other voltages and 60 Hz on request) AC (~) : 24V - 115V - 230V / 50 Hz

| coil type | Leistung | | | | ambient temperature range (°C) | protection | replacement coil | |
|------------|---------------------|--------------------------|-----|----------------------|--------------------------------|------------|------------------|--------------|
| | inrush ~ (VA) | holding ~ (VA) (W) | | hot/cold = (W) | | | ~ 230 V/50 Hz | = 24 V DC |
| | | (VA) | (W) | | | | | |
| CM6-FT | 34 | 15,6 | 6 | - | -20 to +85 | IP65/IP67 | 400325-117 | - |
| CM6-FT (1) | - | - | - | 14 / 20,8 | | | IP65/IP67 | - |

(1) Intermittent duty, Relative Duty Time is 10%. Max. on time is 1 min.

SPECIFICATIONS

| pipe size | orifice size | flow coefficient Kv | | operating pressure differential (bar) | | prefix optional solenoids | | | | | catalogue number | FPM |
|--|--------------|---------------------|---------|---------------------------------------|-----|---------------------------|----|----|--------|----|------------------|-----|
| | | | | | | | | | | | | |
| G | (mm) | (m³/h) | (l/min) | air (*) | ~/= | SC | WP | SG | EM (T) | NF | Aluminium | |
| (G) - Threaded pipe connection | | | | | | | | | | | | |
| 3/4 | 25 | 14 | 233 | 0,35 | 8,5 | ● | ● | ● | ● | ● | G353A043 | V |
| 1 | 25 | 17 | 283 | | | G353A044 | V | | | | | |
| Ø - Compression fitting pipe connection | | | | | | | | | | | | |
| 3/4 | 25 | 14 | 233 | 0,35 | 8,5 | ● | ● | ● | ● | ● | G353-052 | V |
| 1 | 25 | 17 | 283 | | | G353-053 | V | | | | | |

● : available feature

60056GB-2018/R01 Availability, design and specifications are subject to change without notice. All rights reserved.

OPTIONS

- Waterproof enclosure with embedded screw terminal coil according to protection class IP67, CEE 10
- Explosionproof solenoids for hazardous locations according to "ATEX" and national standards
- IECEx certification
- Plug with visual indication and/or peak voltage suppression
- Electronic timer
- Valves can also be supplied with FPM (fluorelastomer) diaphragm and seal materials. Use the appropriate optional suffix letter for identification

INSTALLATION

- The valves can be mounted in any position without affecting operation
- Pipe connection identifier is: G = G (ISO 228/1) or compression fitting
- For compression fitting types tightness is achieved by the compressed gasket on the blow tube
- The use of the rubber gaskets as sealing members will allow a slight misalignment in piping when using compression fittings
- Other pipe threads are available on request
- Installation/maintenance instructions are included with each valve
- Spare parts kit and replacement coils on request

DIMENSIONS (mm), WEIGHT (kg)

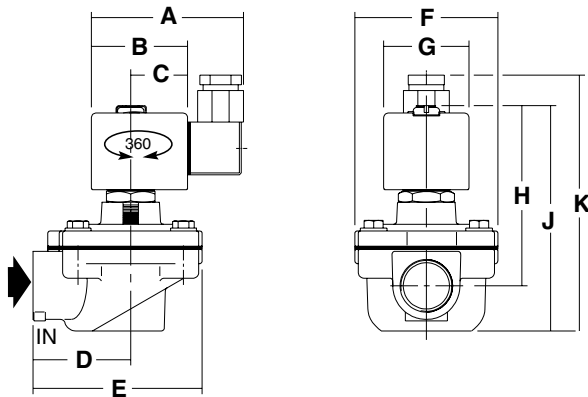


Fig. 1 threaded type

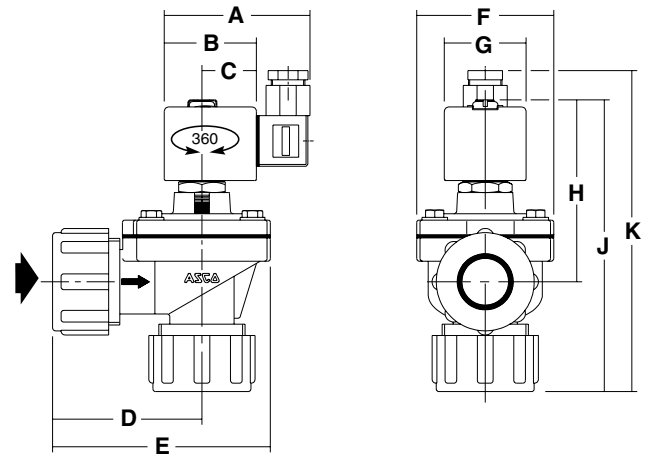


Fig. 2 compression fitting type

| catalogue number | A | B | C | D | E | F | G | H | J | K | weight (1) | (C) |
|------------------|----|----|----|----|-----|----|----|----|-----|-----|------------|--------|
| SC G353A043 | 75 | 45 | 27 | 51 | 89 | 75 | 39 | 92 | 113 | 130 | 0,70 | Fig. 1 |
| SC G353A044 | 75 | 45 | 27 | 51 | 89 | 75 | 39 | 92 | 113 | 130 | 0,65 | Fig. 1 |
| SC G353-052 | 75 | 45 | 27 | 81 | 125 | 75 | 39 | 92 | 175 | 195 | 0,85 | Fig. 2 |
| SC G353-053 | 75 | 45 | 27 | 81 | 125 | 75 | 39 | 92 | 175 | 195 | 0,90 | Fig. 2 |
| Atex II3D | | | | | | | | | | | | |
| SG G353A043 | 89 | 57 | 31 | 51 | 89 | 75 | 50 | 92 | 113 | 130 | 0,70 | Fig. 1 |
| SG G353A044 | 89 | 57 | 31 | 51 | 89 | 75 | 50 | 92 | 113 | 130 | 0,65 | Fig. 1 |
| SG G353-052 | 89 | 57 | 31 | 81 | 125 | 75 | 50 | 92 | 175 | 195 | 0,85 | Fig. 2 |
| SG G353-053 | 89 | 57 | 31 | 81 | 125 | 75 | 50 | 92 | 175 | 195 | 0,90 | Fig. 2 |

(1) including coil and connector (prefix SC or SG)

(C) construction type

SPARE PARTS KITS

| catalogue number | spare parts kit no. ~/= |
|------------------|----------------------------|
| SC G353A043 | C113444 |
| SC G353A044 | |
| SC G353-052 | |
| SC G353-053 | |
| SG G353A043 | |
| SG G353A044 | |
| SG G353-052 | |
| SG G353-053 | |