

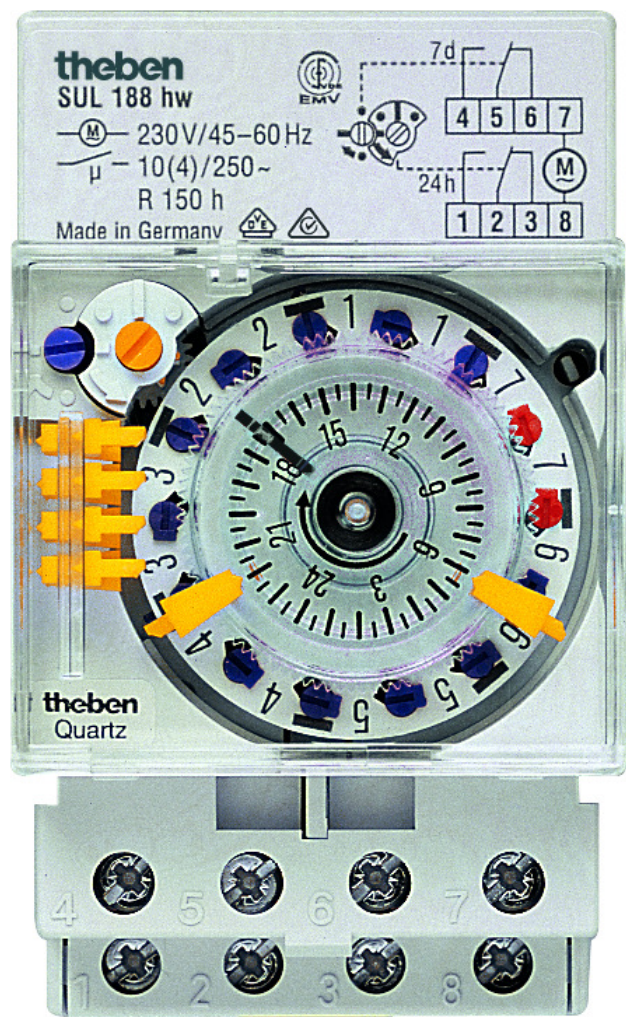
# SUL 188 hw

Item no.: 1880108

Time and light control  
Analogue time switches

## Description

- Daily/weekly program and 1/2 day OFF function for the weekdays
- 1 channel (with series connection of the 2 contacts)
- Tappets and turning segments
- Shortest switching time: 45 minutes (12 hours for the 1/2 day OFF function)
- 6 tappets included in delivery
- Analogue time switch
- With power reserve (NiMH rechargeable battery)
- Quartz controlled
- Tappets
- Screw terminals
- Switching status display
- Operating indication



## Technical data

SUL 188 hw	
Operating voltage	230 V AC
Frequency	45 - 60 Hz
Number of channels	1
Width	3 modules
Installation type	DIN rail

SUL 188 hw	
Type of connection	Screw terminals
Drive	Quartz-controlled stepper motor
Program	Daily program
Power reserve	3 days
Switching capacity at 250 V AC, $\cos \varphi = 1$	10 A

Subject to technical changes and misprints

additional information at: [www.theben.de/product/1880108](http://www.theben.de/product/1880108)

The load data are determined with exemplary selected illuminants and are therefore typical data due to the large number of available products.

# SUL 188 hw

Item no.: 1880108

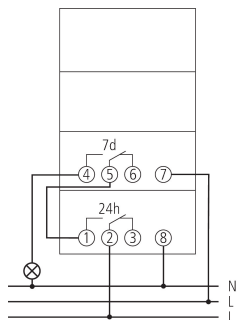
# theben

## Technical data

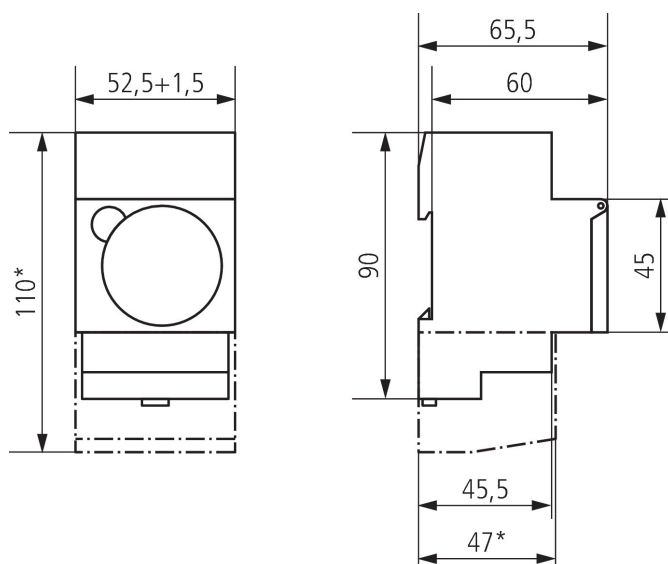
SUL 188 hw	
Switching capacity at 250 V AC, $\cos \varphi = 0,6$	4 A
Shortest switching times	45, 12 min
Programmable every	15, 12 min
Time accuracy at 25 °C	$\leq \pm 1$ s/day (quartz)
Type of contact	Changeover contact
Switching output	Potential-free and phase-independent

SUL 188 hw	
Stand-by consumption	~0.5 W
Test approval	VDE
Housing and insulation material	High-temperature resistant, self-extinguishing thermoplastic
Type of protection	IP 20
Protection class	II according to EN 60 730-1
Ambient temperature	-20°C ... 55°C

## Connection example



## Scale drawings



Subject to technical changes and misprints

additional information at: [www.theben.de/product/1880108](http://www.theben.de/product/1880108)

The load data are determined with exemplary selected illuminants and are therefore typical data due to the large number of available products.

# SUL 188 hw

Item no.: 1880108

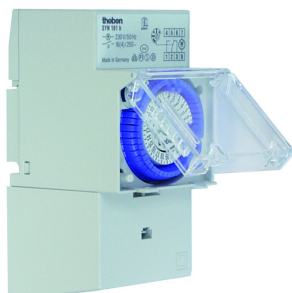


## Accessories

---

**Terminal cover 52,5 mm**

Item no.: 9070061



**Front panel kit**

Item no.: 9070001



Subject to technical changes and misprints

additional information at: [www.theben.de/product/1880108](http://www.theben.de/product/1880108)

The load data are determined with exemplary selected illuminants and are therefore typical data due to the large number of available products.